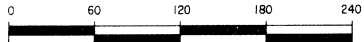


"AVON HILLS VILLAGE No. 5"

PART OF THE SOUTH 1/2 OF SECTION 22, T.3N., R.11E.,
CITY OF ROCHESTER HILLS, OAKLAND COUNTY, MICHIGAN

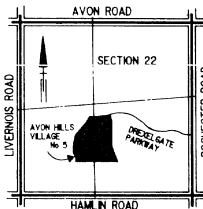
SHEET 1 OF 4 SHEETS



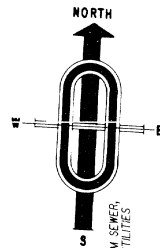
SCALE 1 INCH = 60 FEET

PLAT LEGEND

ALL DIMENSIONS ARE IN FEET.
ALL CURVILINEAR DIMENSIONS ARE SHOWN ALONG THE ARC.
R. DENOTES RADIAL. N.R. DENOTES NOT RADIAL.
THE SYMBOL "O" INDICATES A MONUMENT WHICH IS A 1/2" DIAMETER
STEEL BAR 36" LONG, ENCASED IN 4" DIAMETER CONCRETE.
ALL LOT MARKERS ARE 1/2" IRON PIPES AND ARE 18" LONG.
ALL BEARINGS ARE IN RELATION TO THE BEARING OF THE
WEST LINE OF "AVON HILLS VILLAGE SUB. NO. 4" AS RECORDED IN
LIBER 191, PAGES 14, 15 & 15 O.C.R.
THE SYMBOL "•" DENOTES ANGLE POINT.

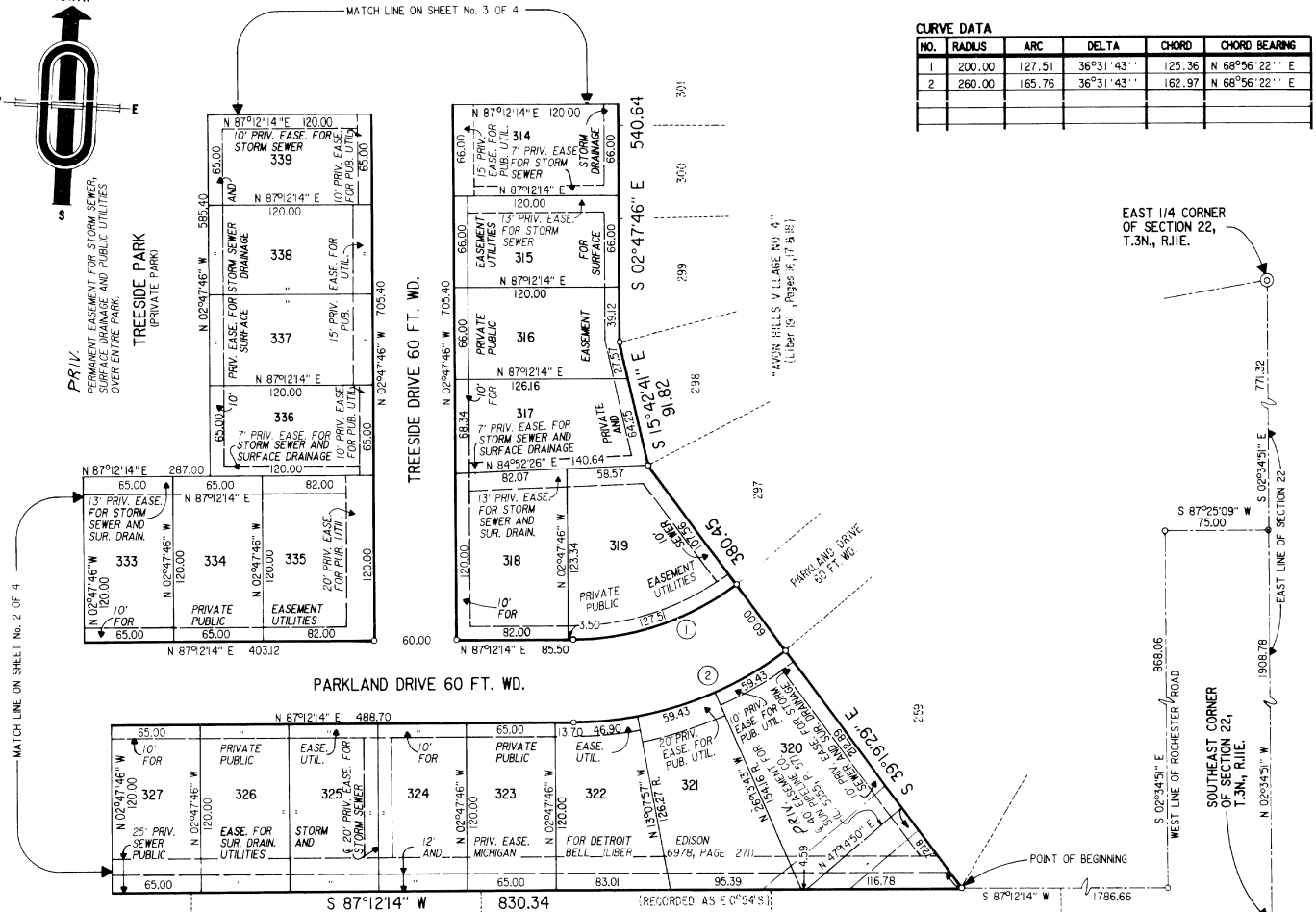


LOCATION MAP
NOT TO SCALE



PERM. EASEMENT FOR STORM SEWER,
SURFACE DRAINAGE AND PUBLIC UTILITIES
OVER ENTIRE PARK.

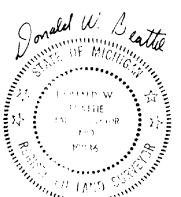
TREESIDE PARK
(PRIVATE PARK)



CURVE DATA

NO.	RADIUS	ARC	DELTA	CHORD	CHORD BEARING
1	200.00	127.51	36°31'43"	125.36	N 68°56'22" E
2	260.00	165.76	36°31'43"	162.97	N 68°56'22" E

RECORDED PLAT
DEPARTMENT OF COMMERCIAL
By *Richard E. ...*
Richard E. Loman, L.L.M.
Manager Plat Section
11/20/88



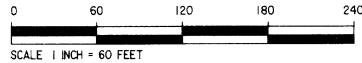
59783

MCS ASSOCIATES, INC.
CIVIL ENGINEERING & SURVEYING
STERLING HEIGHTS, MICHIGAN 48310

"AVON HILLS VILLAGE No. 5"

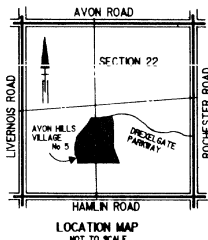
PART OF THE SOUTH 1/2 OF SECTION 22, T.3N., R.1E.,
CITY OF ROCHESTER HILLS, OAKLAND COUNTY, MICHIGAN

SHEET 2 OF 4 SHEETS

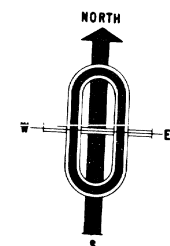


PLAT LEGEND

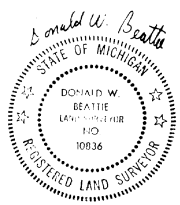
ALL DIMENSIONS ARE IN FEET.
ALL CURVILINEAR DIMENSIONS ARE SHOWN ALONG THE ARC.
R. DENOTES RADIAL. N.R. DENOTES NOT RADIAL.
THE SYMBOL "O" INDICATES A MONUMENT WHICH IS A 1/2" DIAMETER STEEL BAR 36" LONG, ENCASED IN 4" DIAMETER CONCRETE.
ALL LOT MARKERS ARE 1/2" IRON PIPES AND ARE 18" LONG.
ALL BEARINGS ARE IN RELATION TO THE BEARING OF THE WEST LINE OF "AVON HILLS VILLAGE SUB. NO. 4" AS RECORDED IN LIBER 191, PAGES 16, 17 & 18 O.C.R.
THE SYMBOL "•" DENOTES ANGLE POINT.



NO.	RADIUS	ARC	DELTA	CHORD	CHORD BEARING
3	200.00	66.20	18°57'56"	65.90	N 06°50'31" E
4	260.00	86.06	18°57'56"	85.67	N 06°50'31" E
5	260.00	86.06	18°57'56"	85.67	N 06°50'31" E
6	200.00	66.20	18°57'56"	65.90	N 06°50'31" E
7	200.00	123.79	35°27'44"	121.82	N 69°37'41" E
8	60.00	58.40	55°46'16"	56.12	N 24°00'41" E
9	60.00	273.04	260°43'56"	91.43	N 53°30'29" W
10	60.00	35.28	33°41'32"	34.78	N 60°00'43" E
11	260.00	200.54	44°11'36"	195.61	N 65°15'45" E
12	200.00	135.44	38°48'00"	132.95	N 16°45'33" E
13	260.00	176.07	38°48'00"	172.72	N 16°45'33" E



TREESIDE PARK
PRIVATE (PRIVATE PARK)
PERMANENT EASEMENT FOR STORM SEWER, SURFACE DRAINAGE AND PUBLIC UTILITIES OVER ENTIRE PARK.



S 87°21'33" W 694.85 (RECORDED AS: E 0°54' S)
S 87°12'14" W 830.34 (RECORDED AS: E 0°54' S)

MCS ASSOCIATES, INC.
CIVIL ENGINEERING & SURVEYING
STERLING HEIGHTS, MICHIGAN 48310

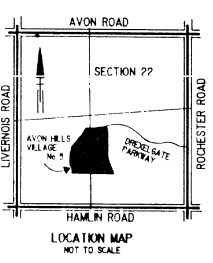
"AVON HILLS VILLAGE No. 5"

PART OF THE SOUTH 1/2 OF SECTION 22, T.3N., R.1E.,
CITY OF ROCHESTER HILLS, OAKLAND COUNTY, MICHIGAN

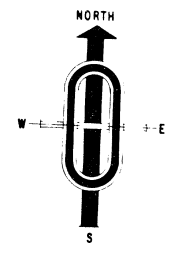
SHEET 3 OF 4 SHEETS



PLAT LEGEND
ALL DIMENSIONS ARE IN FEET.
ALL CURVILINEAR DIMENSIONS ARE SHOWN ALONG THE ARC.
R. DENOTES RADIAL. N.R. DENOTES NOT RADIAL.
THE SYMBOL "O" INDICATES A MONUMENT WHICH IS A 1/2" DIAMETER STEEL BAR 36" LONG, ENCASED IN 4" DIAMETER CONCRETE.
ALL "LOT MARKERS" ARE 1/2" IRON PIPES AND ARE 18" LONG.
ALL BEARINGS ARE IN RELATION TO THE BEARING OF THE WEST LINE OF "AVON HILLS VILLAGE SUB. NO. 4" AS RECORDED IN LIBER 191, PAGES 16, 17 & 18 O.C.R.
THE SYMBOL "•" DENOTES ANGLE POINT.

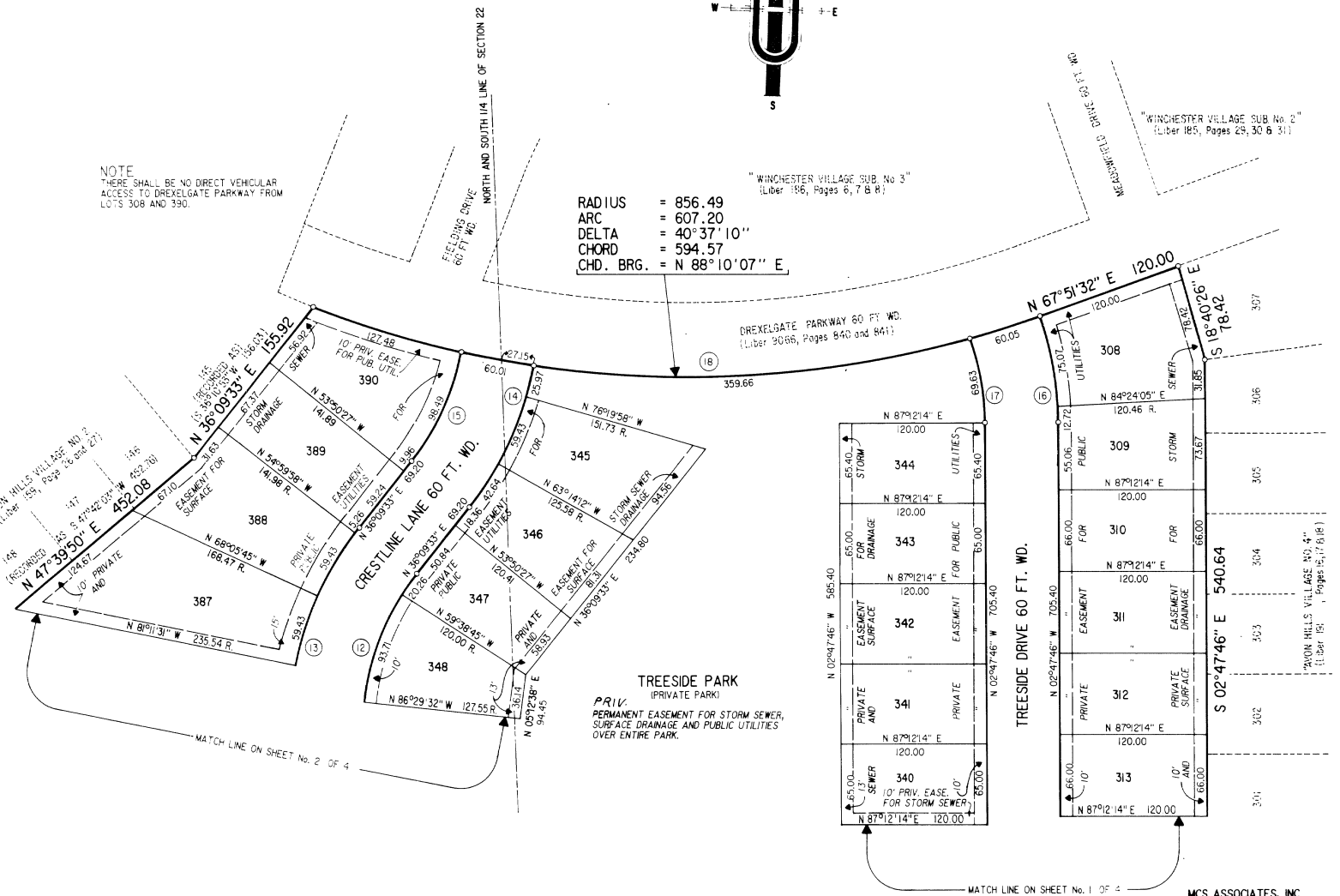


NOTE
THERE SHALL BE NO DIRECT VEHICULAR ACCESS TO DREXELGATE PARKWAY FROM LOTS 308 AND 390.



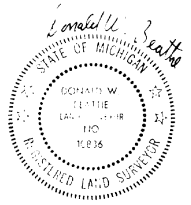
CURVE DATA

NO.	RADIUS	ARC	DELTA	CHORD	CHORD BEARING
12	200.00	135.44	38°48'00"	132.86	N 16°45'33" E
13	260.00	176.07	38°48'00"	172.72	N 16°45'33" E
14	260.00	128.04	28°12'56"	126.75	N 22°03'05" E
15	200.00	98.49	28°12'56"	97.50	N 22°03'05" E
16	260.00	87.79	19°20'42"	87.37	N 12°28'07" W
17	200.00	69.63	19°20'42"	69.28	N 12°28'07" W
18	856.49	607.20	40°37'10"	594.57	N 88°10'07" E



RADIUS = 856.49
ARC = 607.20
DELTA = 40°37'10"
CHORD = 594.57
CHD. BRG. = N 88°10'07" E

TREESIDE PARK (PRIVATE PARK)
PRIV. PERMANENT EASEMENT FOR STORM SEWER, SURFACE DRAINAGE AND PUBLIC UTILITIES OVER ENTIRE PARK.



MCS ASSOCIATES, INC.
CIVIL ENGINEERING & SURVEYING
STERLING HEIGHTS, MICHIGAN 48310

"AVON HILLS VILLAGE No. 5"

PART OF THE SOUTH 1/2 OF SECTION 22, T.3N., R.11E.,
CITY OF ROCHESTER HILLS, OAKLAND COUNTY, MICHIGAN

SURVEYOR'S CERTIFICATE

I, Donald W. Beattie, Surveyor, certify:

That I have surveyed, divided, and mapped the land shown on this plat, described as follows: "AVON HILLS VILLAGE NO. 5" Part of the South 1/2 of Section 22, T.3N., R.11E., City of Rochester Hills, Oakland County, Michigan. Beginning at a point which is S02°34'51"E 771.32 ft. along the East line of Section 22, and S87°25'09"W 75.00 ft., and S02°34'51"E 868.06 ft. along the West line of Rochester Road, and S87°12'14"W 1786.66 ft. along the North line of HAMLIN PLACE FARMS (Liber 15, Page 34) from the East 1/4 corner of Section 22, T.3N., R.11E.; thence, along the North line of said HAMLIN PLACE FARMS, S87°12'14"W 830.34 ft., and S87°21'33"W 694.85 ft.; thence, along the boundary of AVON HILLS VILLAGE NO. 2, (Liber 159, Pages 26 and 27), N02°38'12"W 120.00 ft., and N25°02'08"W 64.89 ft., and N02°29'20"W 142.38 ft., and N15°46'44"E 169.41 ft., and N36°35'11"E 113.31 ft., and N47°39'50"E 452.08 ft., and N36°09'33"E 155.92 ft.; thence, along the Southerly R.O.W. line of Drexelgate Parkway, 60 ft. wd., (Liber 9066, Pages 840 and 841), Easterly 607.20 ft. along the arc of a curve to the left (Radius of 856.49 ft., central angle of 40°37'10", long chord bears N88°10'07"E 594.57 ft.), and N67°51'32"E 120.00 ft.; thence, along the boundary of "AVON HILLS VILLAGE NO. 4" (Liber 9, Pages 6, 7 and 18), S18°40'26"E 78.42 ft., and S02°47'46"E 540.64 ft., and S15°42'41"E 91.82 ft., and S39°19'29"E 380.45 ft. to the point of beginning. Containing 25.940 Acres and comprising 83 Lots numbered 308 through 390, both inclusive, and one private park.

That I have made such survey, land division and plat by the direction of the owners of such land.

That such plat is a correct representation of all the exterior boundaries of the land surveyed and the subdivision of it.

That the required monuments and lot markers have been located in the ground or that surety has been deposited with the municipality as required by Section 125 of the Act.

That the accuracy of survey is within the limits required by Section 126 of the Act.

That the bearings shown on the plat are expressed as required by Section 126 (3) of the Act and as explained in the legend.

MCS Associates, Inc.
35520 Mound Road
Sterling Heights, Michigan - 48310

DATE April 6, 1987

Donald W. Beattie
Donald W. Beattie, R.L.S.
President - No. 10836

PROPRIETOR'S CERTIFICATE

Gilbert & Vennettilli, Inc., a Michigan Corporation, as Proprietor, has caused the land embraced in this plat to be surveyed, divided, mapped and dedicated as represented on this plat and that the streets are for the use of public; that the public utility easements are private easements, and that all other easements are for the uses shown on the plat. Private park, Treeside Park, is for the use of lot owners in "AVON HILLS VILLAGE No. 5" and other subdivisions of the same name.

There shall be no direct vehicular access to Drexelgate Parkway from Lots 308 and 390.

Gilbert & Vennettilli, Inc.
A Michigan Corporation
2565 South Rochester Road
Rochester, Michigan 48063

Witness:

Debra Cataldo
Debra Cataldo

Prudence A. Herbstler
Prudence A. Herbstler

William G. Gilbert
William G. Gilbert
President

ACKNOWLEDGEMENT

STATE OF MICHIGAN) S.S.
(County of Oakland)

Personally came before me this 6th day of April, 1987, William G. Gilbert, President, of the above-named corporation, to me known to be the person who executed the foregoing instrument and to me known to be such President of said corporation, and acknowledged that he executed the foregoing instrument as such officer as the free act and deed of said corporation, by its authority.

Notary Public Prudence A. Herbstler, Oakland County, Michigan
Prudence A. Herbstler

My Commission Expires 4-29-89

COUNTY TREASURER'S CERTIFICATE

The records in my office show no unpaid taxes or special assessments for the five years preceding April 8, 1987 involving the lands included in this plat.

C. Hugh Johany
C. Hugh Johany
Oakland County Treasurer

COUNTY DRAIN COMMISSIONER'S CERTIFICATE

Approved on April 29, 1987, as complying with Section 192 of Act 288, P.A. 1967, and the applicable rules and regulations published by my office in the County of Oakland.

George W. John
George W. John
Oakland County
Drain Commissioner

CERTIFICATE OF MUNICIPAL APPROVAL

I certify that this plat was approved by the City Commission of the City of Rochester Hills at a meeting held July 29, 1987, and was reviewed and found to be in compliance with Act 288, P.A. 1967. Surety has been posted for the placing of monuments and lot markers within one year of the above date. Minimum lot width and area required by Section 186 (D) Act 288 of Public Act 1967 has been waived and conforms with the legally adopted zoning and subdivision control ordinances of the City of Rochester Hills. Surety has been posted to insure the installation of public sewer and public water services and road improvements which have not been installed.

Keith Sawdon
Keith Sawdon
City Clerk

COUNTY PLAT BOARD CERTIFICATE

This plat has been reviewed and is approved by the OAKLAND COUNTY PLAT BOARD on August 20, 1987 as being in compliance with all of the provisions of Act 288, P.A. 1967, and the Plat Board's applicable rules and regulations.

Roy Rowland
Roy Rowland
Chairman
Board of County Commissioners

Lynn D. Allen
Lynn D. Allen, County Clerk
Register of Deeds

C. Hugh Johany
C. Hugh Johany
County Treasurer

Harry E. Braga
Harry E. Braga, R.L.S.
County Plat Engineer

RECORDING CERTIFICATE

STATE OF MICHIGAN) S.S.
(County of Oakland)

This plat was received for recording on the 20 day of August, A.D., 1987 at 2:04 P.M. o'clock and is recorded in Liber 122 of Plat Books on Pages 254

Lynn D. Allen
Lynn D. Allen, County Clerk
Register of Deeds

